

System 30 panels

Melbourne Head Office
Schiavello (Vic) Pty Ltd
1 Sharps Road
Tullamarine VIC Australia 3043
T: 61) 3 9330 8888
F: 61) 3 9330 8899

Melbourne Showroom
Schiavello (Vic) Pty Ltd
31-49 Queensbridge Street
Southbank VIC Australia 3006
T: 61) 3 9674 1500
F: 61) 3 9674 1650

Adelaide
Schiavello (SA) Pty Ltd
Ground Floor, 101 Currie Street
Adelaide SA Australia 5000
T: 08) 8112 2300
F: 08) 8231 1419

Brisbane
Schiavello (Old) Pty Ltd
265 Coronation Drive
Milton QLD Australia 4064
T: 07) 3368 3388
F: 07) 3368 2125

Canberra
Schiavello (ACT) Pty Ltd
2-6 Collie Street
Fyshwick ACT Australia 2609
T: 02) 6124 0500
F: 02) 6280 4370

Perth
Schiavello (WA) Pty Ltd
1315 Hay Street
West Perth WA Australia 6005
T: 08) 9322 6555
F: 08) 9322 1337

Sydney
Schiavello (NSW) Pty Ltd
69 Campbell Street
Surry Hills NSW Australia 2010
T: 02) 9211 3311
F: 02) 9212 3788

Japan
Schiavello Japan Limited
Toranomon Marine Building1F,
3-18-19, Toranomon Minato-Ku
Tokyo 105-0001, Japan
T: 81) 3-5402 7541
F: 81) 3-5402 7542

Middle East
Schiavello Project Solutions Pty Ltd
Festival Tower
Office Suite 504
Dubai Festival City, Dubai
United Arab Emirates
T: 971 4 363 5350
F: 971 4 363 5351

Singapore
Schiavello Singapore Pte Ltd
No. 1 Magazine Road
#01-05 Central Mall
Singapore 059567
T: 65) 6533 8011
F: 65) 6533 2811

www.schiavello.com
SCH/SV30-B

Schiavello Group Pty Ltd
reserves the right to change
any or all details without
prior notice. Every effort
has been made to ensure
the information is accurate
at the time of printing.



technical

schiavello



System 30 panels

System 30 panels are simple to understand, plan and install.

Complete rigidity is achieved with an economy of parts and materials.

A breakthrough design that combines elegant simplicity, with strength and quality engineering.

System 30 panel design, engineering and material selection is based on Schiavello's environmental design principles to reduce environmental impact.

Index

panels 02-03

junctions and connectors 04-07

cable reticulation 08-09

worksurfaces 10

accessories 11

images 12

specification of system 30 panel system 13



Panels

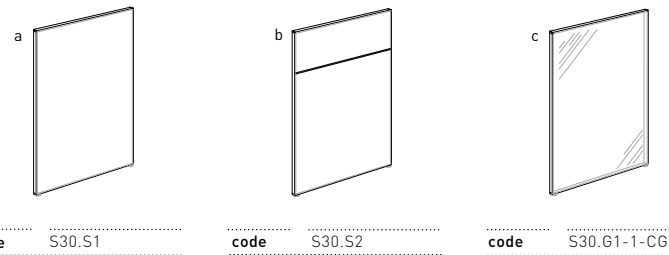
base panels | suspended panels

Key Features

High flexibility with fast assembly, reconfiguration and relocation requiring a single allen key.
Panels are 30 mm thick with (load bearing) top transom rail and off-module panel capability.
Minimal componentry required for panel junctions available in 90°, 120° and linear.
Optional cable reticulation and outlet modules.

Choice of standard panel construction, optional pinable or acoustic sound absorbing panel cores.
Seamless compatibility with comprehensive ranges of desking, storage, tables and accessory options.
Extensive selection of panel types, colours and finishes.
All components are reusable.

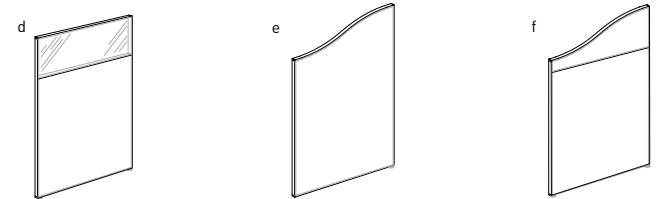
BASE PANELS



code S30.S1

code S30.S2

code S30.G1-1-CG

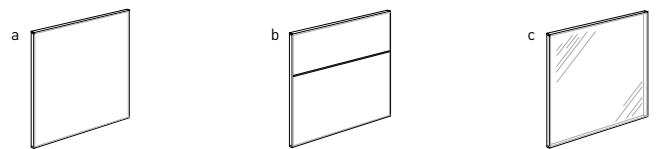


code S30.SG-1-CG

code S30.S1-W

code S30.S2-W

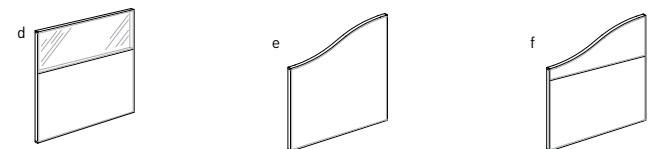
SUSPENDED PANELS



code S30-SU.S1

code S30-SU.S2

code S30-SU.G1-1-CG



code S30-SU.SG-1-CG

code S30-SU.S1-W

code S30-SU.S2-W

When System 30 panels are required to support transom hung or function wall hung shelves, 'block type' panel core construction **must be** specified.

- a_Solid panel.
- b_Two piece solid panel with mid transom.
- c_Centre full glazed panel.
- d_Two piece centre partial glazed panel with mid transom.
- e_Solid panel with wave top.
- f_Two piece solid panel with mid transom and wave top.

BASE PANELS

panel heights (mm)	panel widths (mm)									
	450	600	750	800	900	1200	1500	1800	2100	2400
900	•	•	•	•	•	•	•	•	•	•
1050	•	•	•	•	•	•	•	•	•	•
1200	•	•	•	•	•	•	•	•	•	•
1350	•	•	•	•	•	•	•	•	•	•
1500	•	•	•	•	•	•	•	•	•	•
1800	•	•	•	•	•	•	•	•	•	•
2100	•	•	•	•	•	•	•	•	•	•
2400	•	•	•	•	•	•	•	•	•	•

*Special sizes available on request.

- a_Solid panel.
- b_Two piece solid panel with mid transom.
- c_Centre full glazed panel.
- d_Two piece centre partial glazed panel with mid transom.
- e_Solid panel with wave top.
- f_Two piece solid panel with mid transom and wave top.

SUSPENDED PANELS

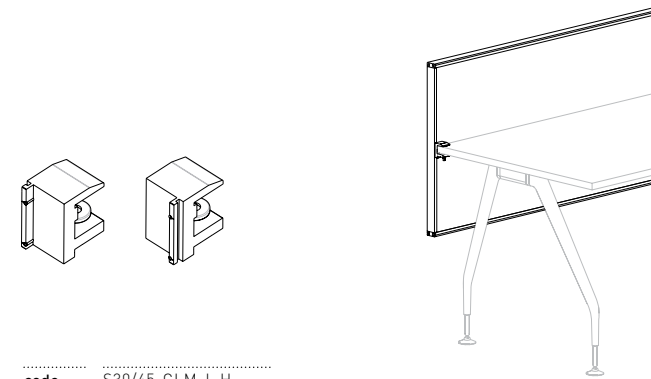
panel heights (mm)	panel widths (mm)							
	450	600	750	800	900	1200	1500	1800
900	•	•	•	•	•	•	•	•
1050	•	•	•	•	•	•	•	•
1200	•	•	•	•	•	•	•	•
1350	•	•	•	•	•	•	•	•
1500	•	•	•	•	•	•	•	•

* Special sizes available on request.
* Panel height dimensions show the actual heights of the panels. They do not include suspension distance from floor.

Panels

glazing option | wall starter bracket | finishes

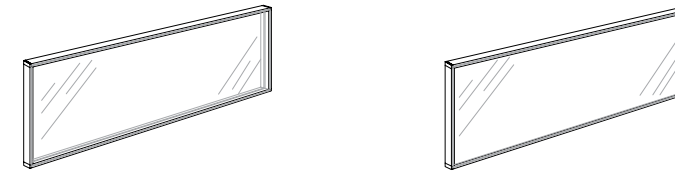
SUSPENDED PANEL ATTACHING BRACKETS



code S30/45-CLM-L.H.
S30/45-CLM-R.H.

GLAZING OPTIONS

Centre glazing
Flush glazing - single sided
Flush glazing - double sided



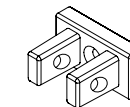
centre glazing CG

Glass is offered in both clear and translucent.
Other finishes available on request.

flush glazing 1-FG or 2-FG

Glass is offered in both clear and translucent.
Can be single or double sided.

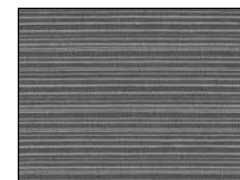
WALL STARTER BRACKETS



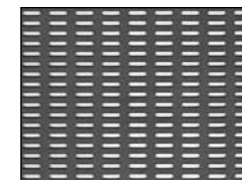
code WS1B-30

connectors required
1-wall starter brackets.

FINISHES



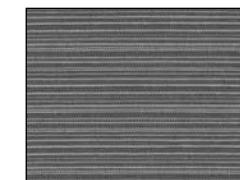
fabric



perforated metal
CR perforation



perforated metal
MW perforation



pinable fabric screen



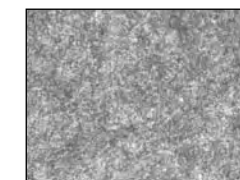
powdercoated MDF



laminate



veneer



echo panel

Panel faces can be specified in a variety of finishes as illustrated.
Panel trims are finished in hard wearing powdercoat with colour as selected.
Materials and colours are subject to availability.

Junction Connectors

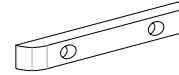
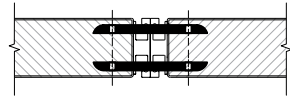
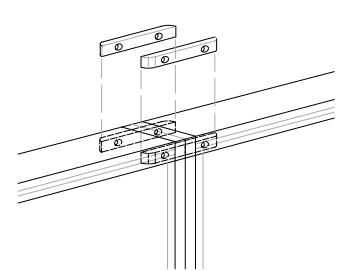
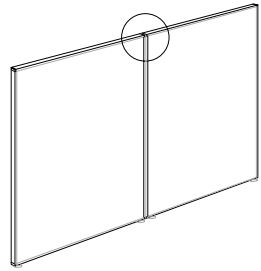
straight junction | 90° two way open junction | 90° two way closed junction | 90° three way open junction
 | common height panels

Each common height junction has an individual product code no. as shown. Connectors are specified as one set for each junction.

By specifying the code no's and quantities of the junctions required, the appropriate quantity and type of connectors will be supplied.

STRAIGHT JUNCTION

COMMON HEIGHT PANELS



set code S30.J180.1W.S (base panel set)

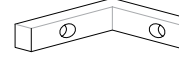
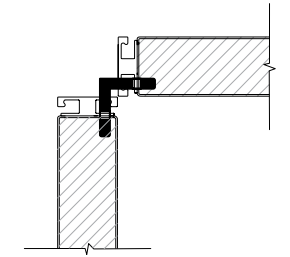
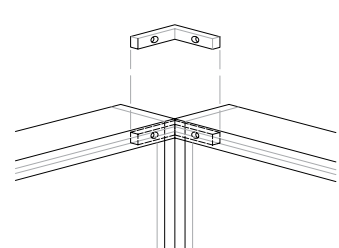
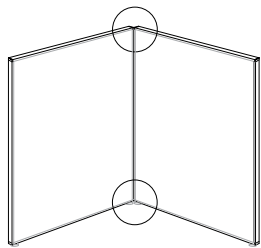
Junction connector set comprises
2-type B-671 011 connectors.

set code S30-SU.J180.1W.S (suspended panel set)

Junction connector set comprises
4-type B-671 011 connectors.

90° TWO WAY OPEN JUNCTION

COMMON HEIGHT PANELS

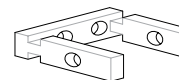
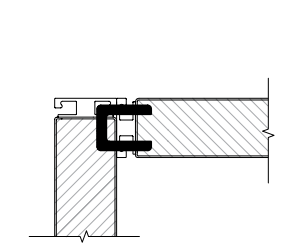
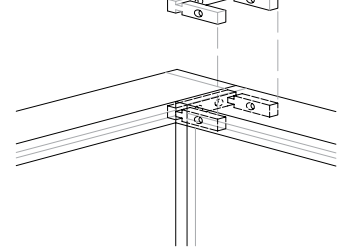
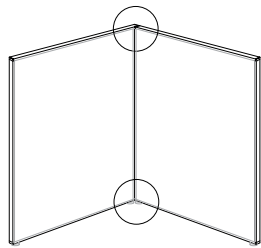


set code S30.J90.2W.O

Junction connector set comprises
2-type B-671 005 connectors.

90° TWO WAY CLOSED JUNCTION

COMMON HEIGHT PANELS

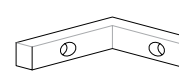
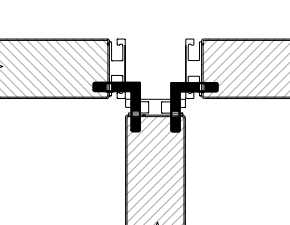
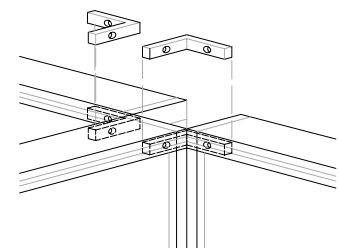
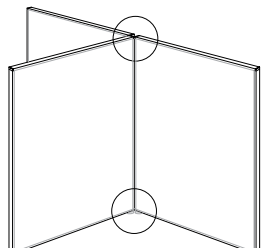


set code S30.J90.2W.C

Junction connector set comprises
2-type B-671 016 connectors.

90° THREE WAY OPEN JUNCTION

COMMON HEIGHT PANELS



set code S30.J90.3W.O

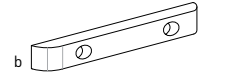
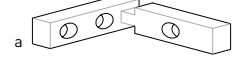
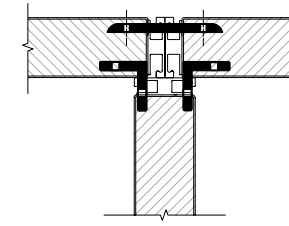
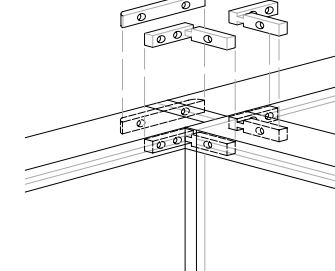
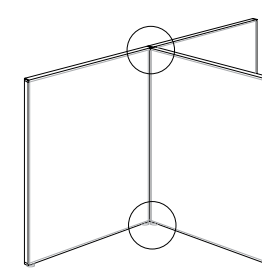
Junction connector set comprises
4-type B-671 005 connectors.

Junction Connectors

90° three way closed junction | 90° off module junction | 90° four way junction | 90° four way umbilical junction
 | common height panels

90° THREE WAY CLOSED JUNCTION

COMMON HEIGHT PANELS

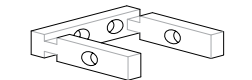
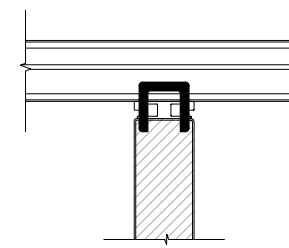
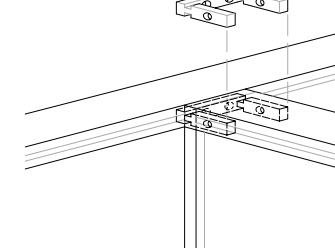
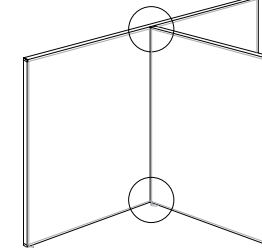


set code S30.J90.3W.C

Junction connector set comprises
a_4-type B-671 003 connectors and
b_2-type B671 011 connectors.

90° OFF MODULE JUNCTION

COMMON HEIGHT PANELS

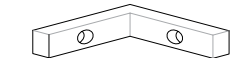
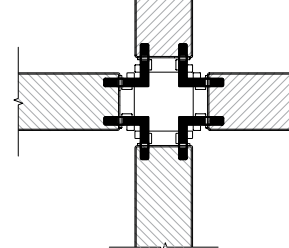
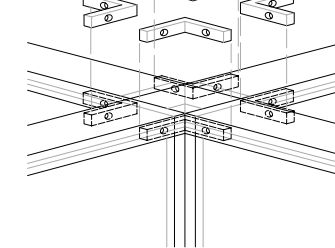
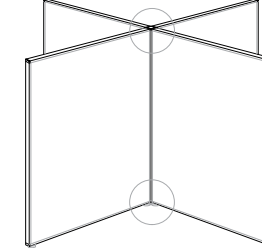


set code S30.J90.3W.OM

Junction connector set comprises
2-type B-671 016 connectors.

90° FOUR WAY JUNCTION

COMMON HEIGHT PANELS



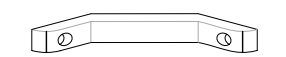
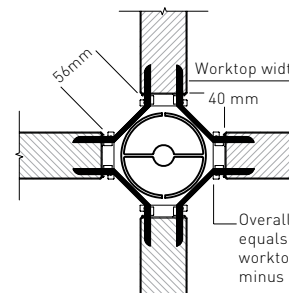
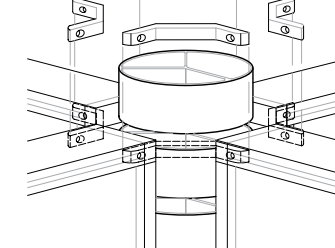
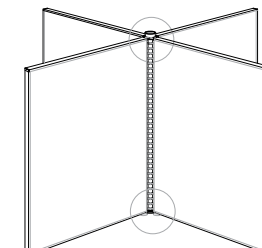
set code S30.J90.4W.C

Junction connector set comprises
8-type B-671 005 connectors.

90° FOUR WAY JUNCTION

Panels set for umbilical entry
(56 mm wide access opening)

COMMON HEIGHT PANELS



set code S30.J90.4W.U (4 way junction)

Junction connector set comprises
8-type B-671 015 connectors.

set code S30.J90.3W.U (3 way junction)

Set comprises
4-type B-671 015 connectors.

Junction Connectors

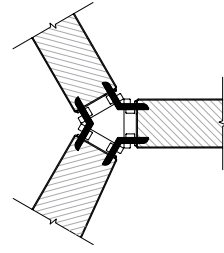
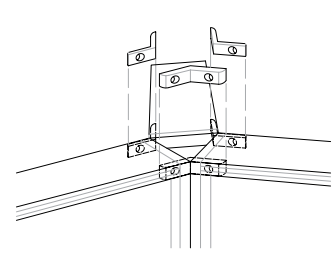
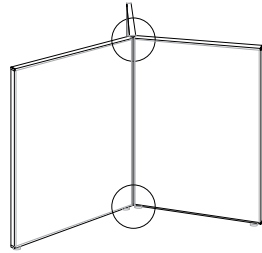
120° three way junction | 120° tech column three way junction | common height panels

Each common height junction has an individual product code no. as shown. Connectors are specified as one set for each junction.

By specifying the code no's and quantities of the junctions required, the appropriate quantity and type of connectors will be supplied.

120° THREE WAY CLOSED JUNCTION

COMMON HEIGHT PANELS



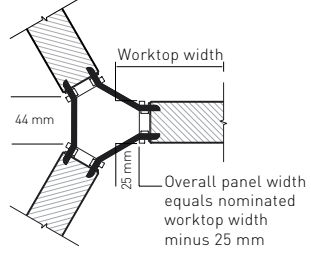
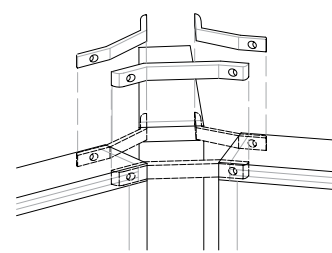
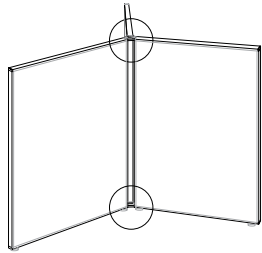
set code S30.J120.3W.C

Junction connector set comprises 6-type B-671 004 connectors.

120° THREE WAY JUNCTION

Panels set for services access. (44 mm wide access opening)

COMMON HEIGHT PANELS



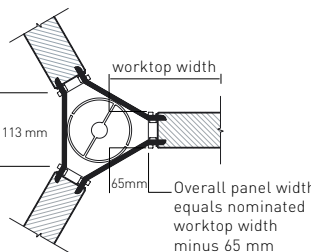
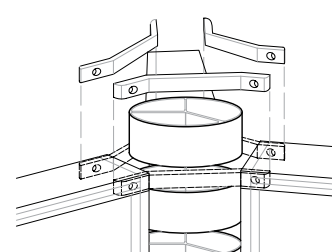
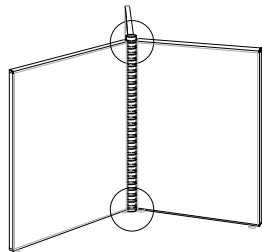
set code S30.J120.3W.O

Junction connector set comprises 6-type B-671 009 connectors.

120° THREE WAY JUNCTION

Panels set for umbilical entry. (113 mm wide access opening)

COMMON HEIGHT PANELS



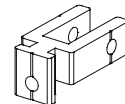
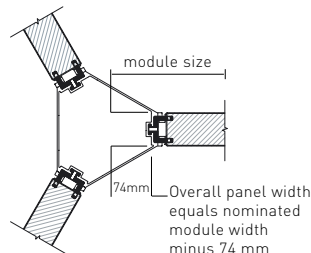
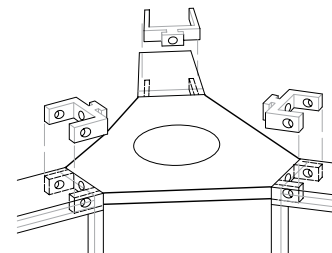
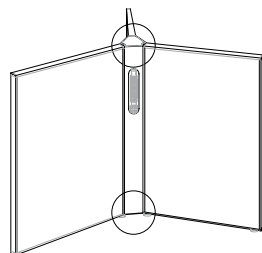
set code S30.J120.3W.U

Junction connector set comprises 6-type B-671 014 connectors.

120° TECH COLUMN THREE WAY JUNCTION

Panels connect to tech column.

COMMON HEIGHT PANELS



set code S30.J120.3W.TC

Junction connector set comprises 6-type 671-017 connectors.

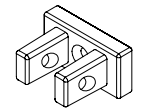
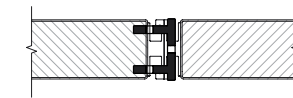
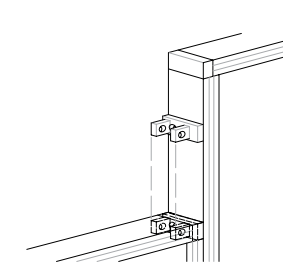
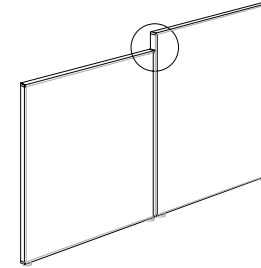
Junction Connectors

180° straight junction | 90° two way open junction | 90° two way closed junction | 90° off module junction | transition height junctions

Junction connectors for transition height junctions are specified per each not 'per set'. Each of the examples shown below indicate the connector product codes and the quantity required of each to achieve the junction.

180° STRAIGHT JUNCTION

TRANSITION HEIGHT PANELS



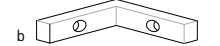
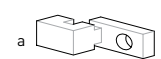
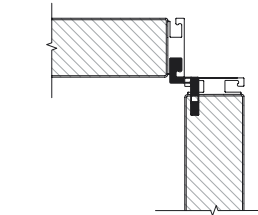
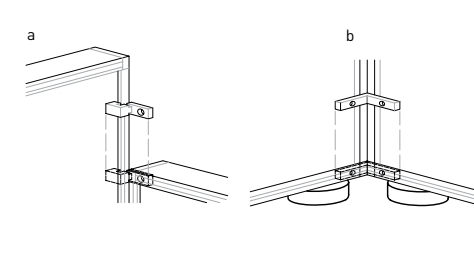
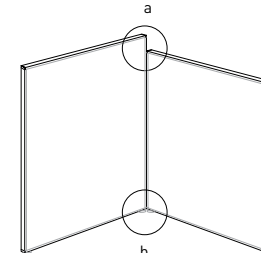
code WS1B-30

connectors required

1-wall starter brackets.

90° TWO WAY OPEN JUNCTION

TRANSITION HEIGHT PANELS



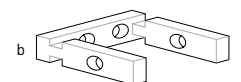
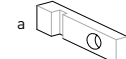
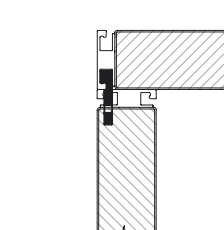
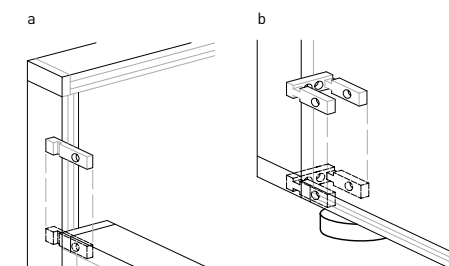
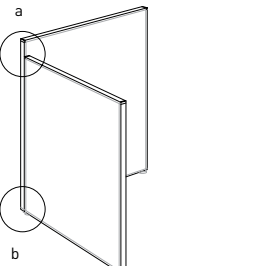
connectors required

a_1- type B-671 013 connector.

b_1- type B-671 005 connector.

90° TWO WAY CLOSED JUNCTION

TRANSITION HEIGHT PANELS



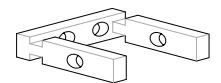
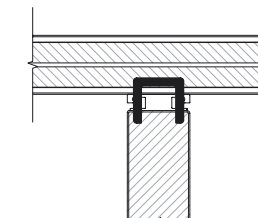
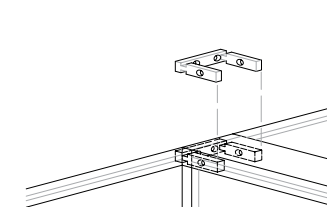
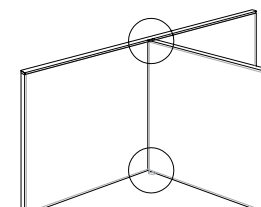
connectors required

a_1- type B-671 001 connector.

b_1- type B-671 016 connector.

90° OFF MODULE JUNCTION

COMMON HEIGHT PANELS



connectors required

2- type B-671 016 connectors.

Cable Reticulation

cable routing | power blades | umbilical | 120° tech column | cylinder power pole

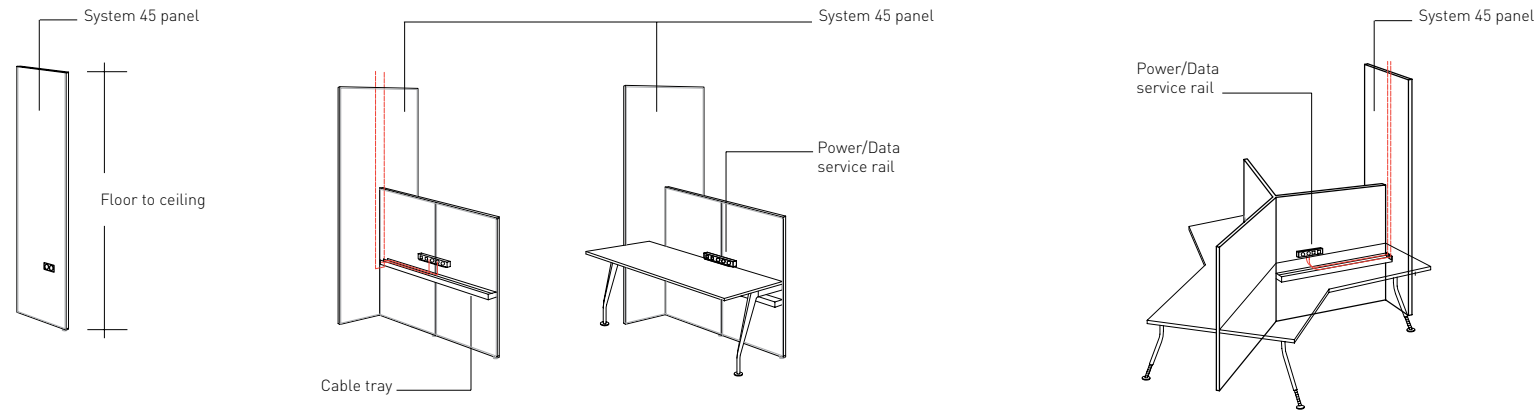
Cable routing

System 30 offers a number of cable routing options. They can be combined to satisfy specific requirements while always providing easy access and efficient cable management throughout entire layouts.

Cables can be routed to panels from ceilings, walls or floors by utilising umbilicals, power blades or tech columns.

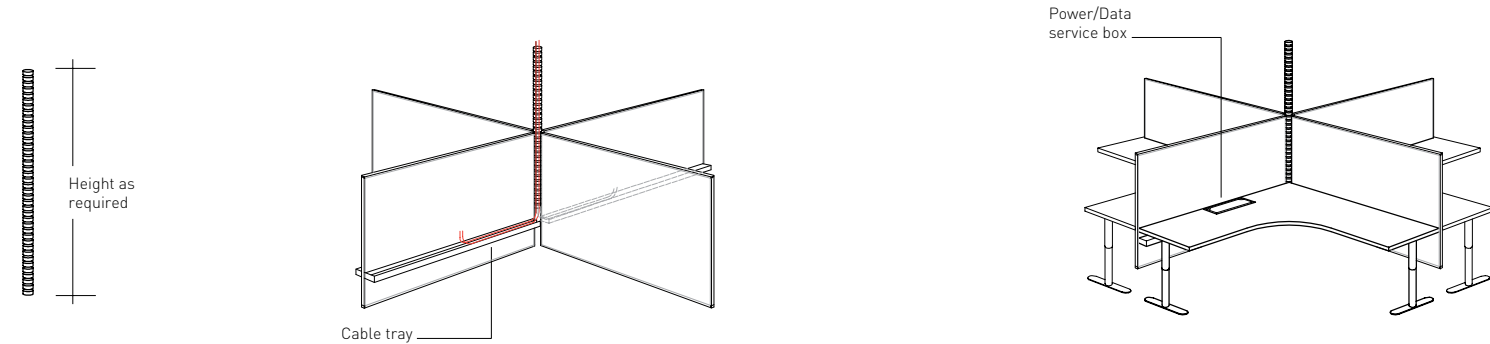
POWER BLADES (system 45 panel)

Cable entry from ceiling or floor.
Exit points to suit requirements.



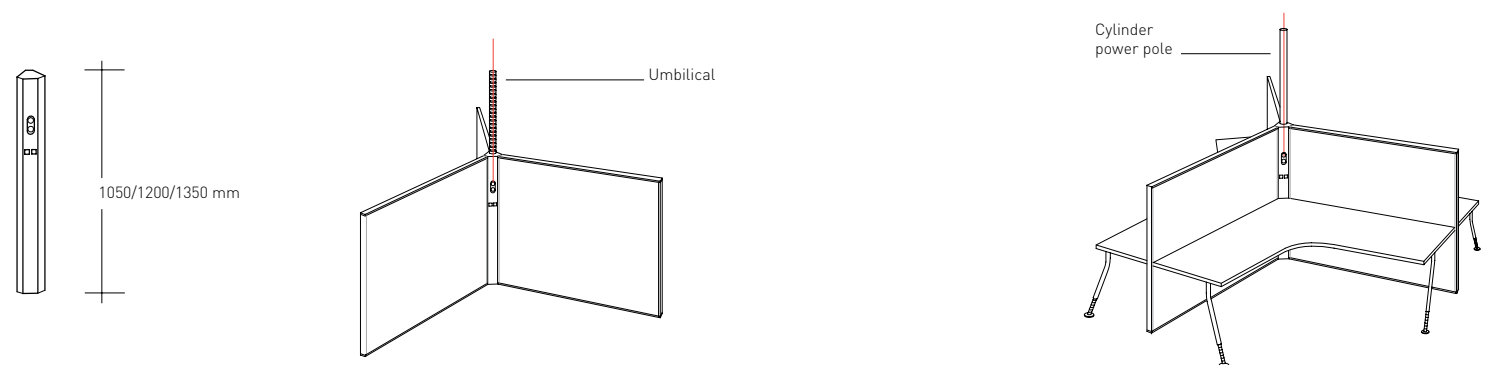
UMBILICALS

Panels set for umbilical entry.
[56 mm wide access opening]



120° TECH COLUMN

Direct cable access from floor.
Ceiling access through top of tech column
via umbilical or 80 mm dia. cylinder power pole.



Cable Reticulation

interpower soft wiring system | cable trays and baskets

Interpower softwiring system

Schiavello interpower electrical softwiring system delivers power and lighting to office workstations.
The system is easily connected, disconnected or relocated without the need to isolate power and with minimal inconvenience.

All connections within the interpower system are protected by a positive lock mechanism to prevent accidental power disconnection.
All components are factory tested and easy to install. All interpower softwiring components are reusable.

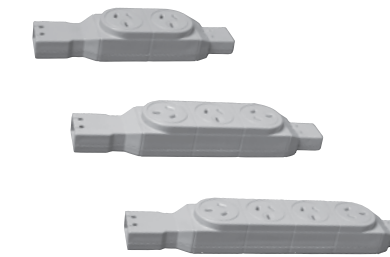
STANDARD SERVICE RAIL



code SR/2P/4D
code SR/3P/4D
code SR/4P/4D

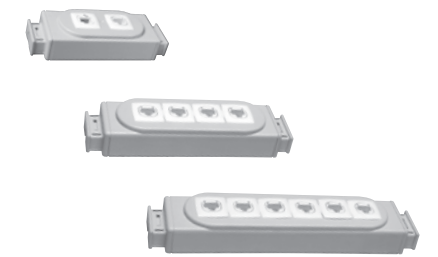
Mounts to rear of desktop.

POWER MODULES



code PM2H
code PM2H1VL
code PM4VL

DATA MODULES



code NGDM/2
code NGDM/4
code NGDM/6

INTERPOWER SOFTWIRING SYSTEM

Refer to Schiavello Interpower brochure SCH/W05-C for complete product information and technical specifications.



code SS
Starter sockets.

code JB-S
Junction box.

code EX-500 [add length
i.e. 600m lead =
EX-500600]
Extension leads.

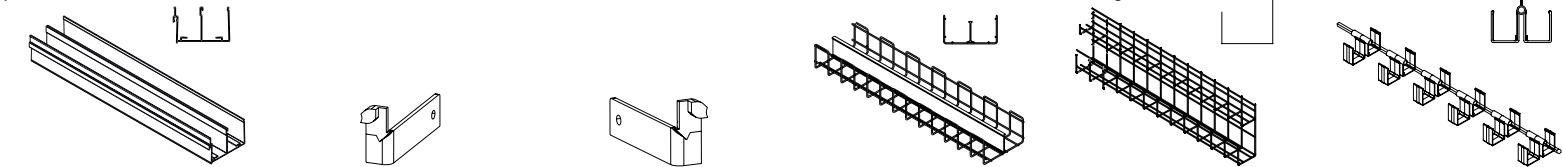
code IDB0.1
Power/Data service box
Inserts into desktops.

code S30CAP
Cable access port.
Optional panel fitting where required
to provide cable access through
closed junctions.

Cable trays and brackets

Optional cable trays and brackets attach to either system 30 panels or underside of worksurfaces.

These simple lay-in and very flexible designs ensure cables can be neatly accommodated without intruding on to the worksurface or floor.



code EL/SERDCT-SQ
height 50 mm
depth 100 mm
width to order
Elitone metal cable tray.

code S30/SERDCT/L
Cable tray support bracket LH.
Attaches to vertical mullion of system 30 panels.

code S30/SERDCT/R
Cable tray support bracket RH.
Attaches to vertical mullion of system 30 panels.

code 2CW/B
height 80 mm (inc.brackets)
depth 160 mm
length 660/860/1060 mm
Cable baskets.
Supplied with 2 brackets attaches to underside of worksurfaces.

code STTW/B
height 230 mm
depth 95 mm
length 900/1200 mm
Cable baskets.
Supplied with 2 brackets attaches to underside of worksurfaces.

code QWCM-ASSY
height 65 mm
depth 120 mm
length to order
QED cable tray.
Attaches to underside of worksurfaces.

Worksurfaces

typical workstation clusters for system 30 | worksurface support brackets | worksurface support legs

Worksurfaces

Worksurfaces can be specified either 25 mm or 33 mm thick. Available finishes include selected laminates, timber veneers and powdercoated MDF in a range of colours.

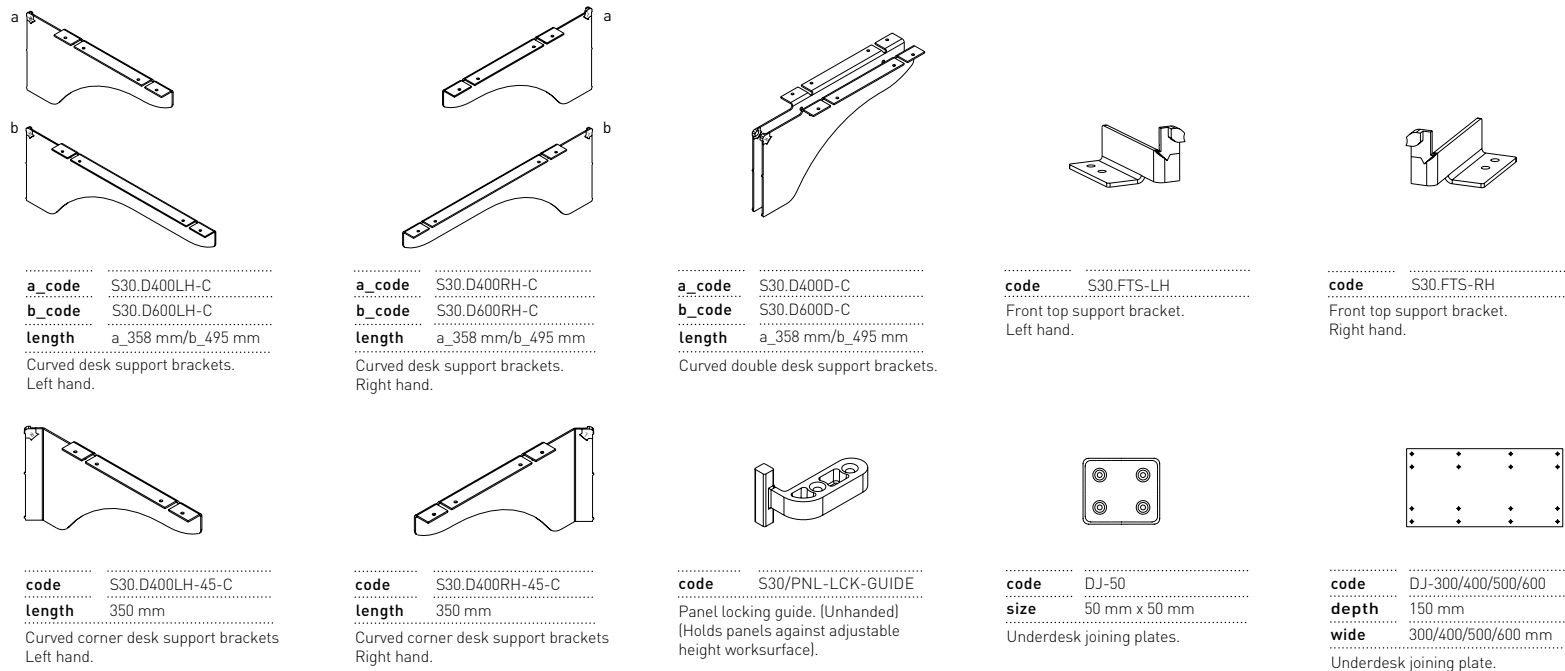
There is a wide selection of shapes and sizes to ensure the right solution for task specific requirements. Edge finishes and shapes also offer many choices with custom shapes available on request.

TYPICAL WORKSTATION CLUSTERS FOR SYSTEM 30

Cluster examples using various shaped worksurfaces.

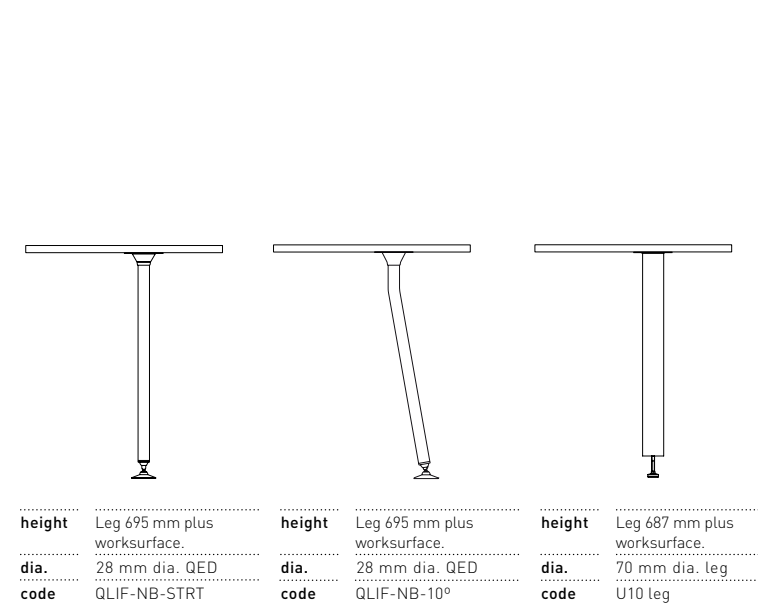


WORKSURFACE SUPPORT BRACKETS



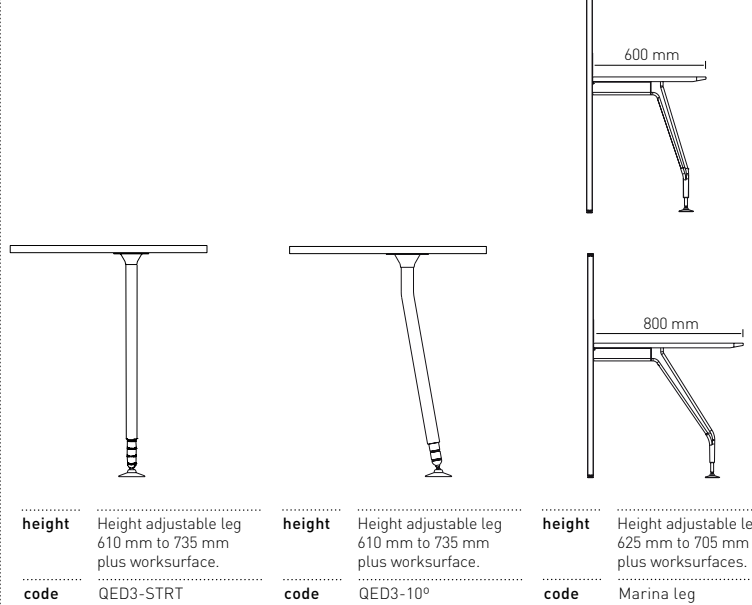
WORKSURFACE SUPPORT LEGS

Fixed height.



WORKSURFACE SUPPORT LEGS

Height adjustable.



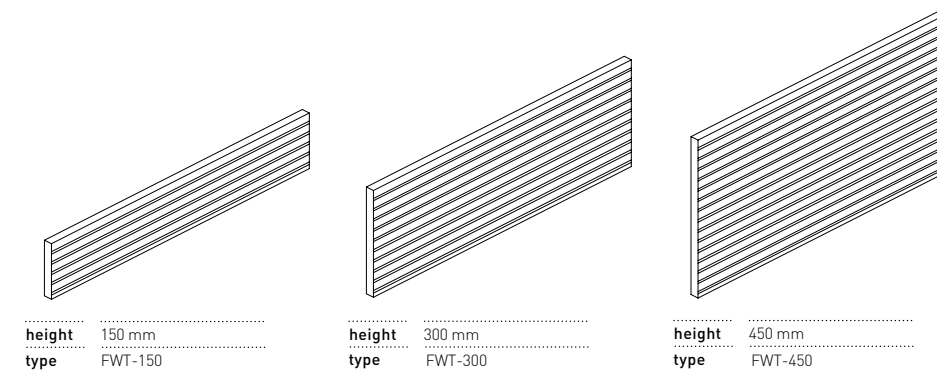
Accessories

function walls | accessories

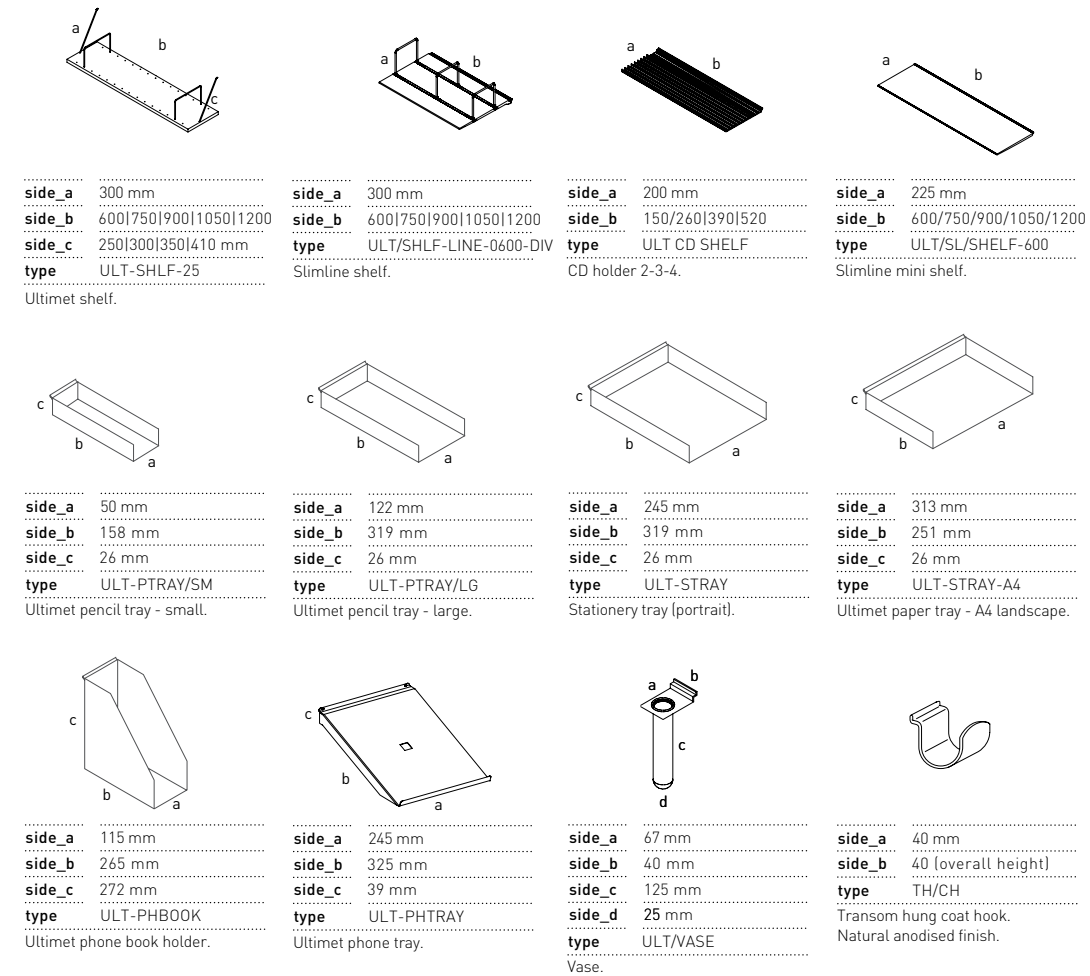
Function walls

Mount to transom rails of system 30 panels via integral mounting detail. Additional brackets not required.

FUNCTION WALLS



ACCESSORIES - FOR TRANSOM RAIL AND FUNCTION WALL MOUNT



Specification of System 30 Panel System

general | panels | connectors | cable reticulation | aluminium finish | warranty

General

System 30 is a fully refined office panel system manufactured by Schiavello Australia. The system is stackable, easily demounted, relocated, extended or reduced in size with all components being reusable.

Panels

The panels have a thickness of 30 mm with single panel widths of up to 2400 mm. They have a load bearing top transom rail and are designed to be either floor mounted or suspended from desks as required and as specified later.

The panels are rigid, with the strength to support hampers, shelves and worktops. They also have provision to accept accessories from both a horizontal and vertical position. The panels provide both integrated and transom mounted whiteboards and function walls including a full range of attachable accessory items.

Panel faces offer a choice of finishes including fabric, perforated metal, powdercoated MDF, laminate, timber veneer, fabric covered pinboard as well as single and double glazing.

Acoustic panels are also offered that have an acoustic sound absorption rate of not less than 60 NRC

Connectors

The connecting system achieves the following junctions and connections:

- (a) 90°, 120°, 180°
- (b) 2 way, 3 way and 4 way junctions with either open access corners or closed corners.
- (c) Off module junctions ie: return panels of common or differing heights are able to achieve a 90° connection to a spine panel at any point along its length

Cable Reticulation

The system includes integrated components that provide efficient means of routing services cabling to the panels from the ceiling, walls or floor. such as power blades, umbilicals or power poles.

The system also includes optional clip-on segregated cable trays with a selection of services outlet modules and soft wiring connections.

The softwiring electrical system is Schiavello Interpower certified to AS/NZS 3131.

Aluminium Finish

All aluminium is powdercoated to Australian Standard AS-NZ3570.

Colour as specified.

Warranty

The manufacturer warrants the system for a period of not less than 5 years against faulty materials and workmanship and guarantees the supply of parts and service of all standard components for a period of not less than 10 years from date of installation.

